



TRACKING CENTRALIZED LUBRICATION SYSTEMS



## PRODUCT PROFILE

*Tracking Lubricants for Enhancing Machine Life*

## INTRODUCTION

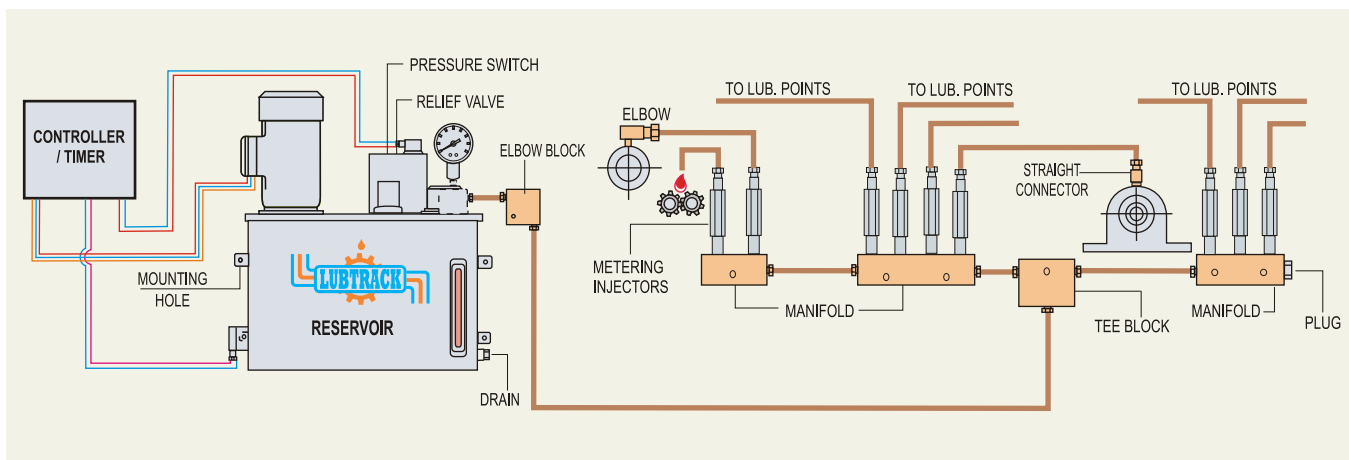
“LUBTRACK” is India’s one of the Leading Manufacture of Centralized Lubrication Systems.

LUBTRACK has kept pace with the changing demands of different customers, by targeted development & innovating new amazing concept, improving existing products already launched in the market. The skilled team of technical engineers understanding customers requirement enables it to work closely to solve individual problems and to supply customer desired lubrication system in different field of application.

**LUBTRACK Centralized Lubrication Systems for Oil & Grease is best suited for:**

- ★ Machine Tools
- ★ Food Processing Machines
- ★ Presses & Hammers
- ★ Calendaring Machines
- ★ Pharmaceuticals Machines
- ★ Pouch Packaging Machines
- ★ Knitting Machines
- ★ Steel Rolling Mills
- ★ Packaging Equipment
- ★ Wood Working Machine
- ★ Printing Machines
- ★ Injection Moulding M/C
- ★ Textile Machines
- ★ Die Casting Machines
- ★ Shearing & Press Brakes
- ★ Rubber Making M/c
- ★ Rubber Mixing Machines
- ★ Paper & Pulp Processing M/c
- ★ Stone Processing Machine
- ★ Sheet Metal Working M/c
- ★ SPM Machines
- ★ Forging Plants
- ★ Cement Plants
- ★ Sugar Plants

## LAYOUT OF CENTRALIZED LUBRICATION SYSTEM



## HAND OPERATED PISTON PUMPS

These pumps are suitable for manual centerised lubrication system of light duty automatic machines such as small power presses, packing machines, milling machines, single spindle automats, looms, surface grinders, pouch fillings machines etc. Normally these pumps are suitable for 2-40 lubricant points.



### Technical Specification

MODEL	DISCHARGE	RESERVOIR	MAX. PRESSURE
LTH 250-4	4cc per stroke	0.25 Ltr.	12kg/cm <sup>2</sup>
LTH 600-6	6cc per stroke	0.60 Ltr.	15kg/cm <sup>2</sup>
LTH 1700-10	10cc per stroke	1.7 Ltr.	18kg/cm <sup>2</sup>
LTH 2000-10*	10cc per stroke	2 Ltr.	18kg/cm <sup>2</sup>
LTH 400-5*	5cc per stroke	0.40 Ltr.	15kg/cm <sup>2</sup>
LTH 600-5*	6cc per stroke	0.60 Ltr.	15kg/cm <sup>2</sup>
LTH 1000-7*	7cc per stroke	0.70 Ltr.	15kg/cm <sup>2</sup>

\*Transparent reservoir

## AUTOMATIC MOTORISED LUBRICATION SYSTEMS

Motorised lubrication unit are electric motor driven pumps along with reservoir, oil filler, suction strainer, pressure relief valve, bleed valve etc. and are suitable for single shot automatic oil lubrication. These motorised lubrication units are to be run intermittently.

During motor 'ON' period (normally 5 sec) all metering cartridges eject out required amount of oil at various point of the machine. and during motor 'OFF' period (decided by lubrication frequency min.1 minute) these metering cartridges get recharged for next lubrication cycle. These unit do not require any return line connection as metered amount of oil is lost in normal running of the machine.



### Technical Specification

MODEL	RESERVOIR	DISCHARGE	MOTOR RPM1500(Syn)	RELIEF VALVE	PRESSURE SWITCH	FLOAT SWITCH
LT LS 2700*	2.7 Ltrs.	1 LPM	0.10 Kw, 220V AC, Single phase	12kg/cm <sup>2</sup>	Optional	Optional
LT LS 03	3 Ltrs.	1 LPM	0.10 Kw, 220V AC, Single phase	15kg/cm <sup>2</sup>	Optional	Optional
LT LU 2700*	2.7 Ltrs.	1 LPM	0.12 Kw, 415V AC, 4Pole, 3 phase	15kg/cm <sup>2</sup>	220V, 1Amp, 1NO+1NC Contact preset at 12kg/cm <sup>2</sup>	220V, 1Amp, with NO or NC contacts
LT LU-03	3 Ltrs.	1 LPM	0.12 Kw, 415V AC, 4Pole, 3 phase	15kg/cm <sup>2</sup>	-do-preset at 12kg/cm <sup>2</sup>	-do-
LT LU-05	5 Ltrs.	1 LPM	0.12 Kw, 415V AC, 4Pole, 3 phase	20kg/cm <sup>2</sup>	-do-preset at 15kg/cm <sup>2</sup>	-do-
LT LU-08	8 Ltrs.	2.5 LPM	0.18 Kw, 415V AC, 4Pole, 3 phase	25kg/cm <sup>2</sup>	-do-preset at 18kg/cm <sup>2</sup>	-do-
LT LU-20	20 Ltrs.	2.5 LPM	0.18 Kw, 415V AC, 4Pole, 3 phase	25kg/cm <sup>2</sup>	-do-preset at 18kg/cm <sup>2</sup>	-do-
LT LU-30	30 Ltrs.	2.5 LPM	0.18 Kw, 415V AC, 4Pole, 3 phase	25kg/cm <sup>2</sup>	-do-preset at 18kg/cm <sup>2</sup>	-do-

\*Transparent reservoir

Note : Model LT LS 2700\* & LT LU 2700\* are also available in liquid grease of grade 000.

## ROTARY PUMP (Flange or Insert Type)

LUBTRACK rotary pumps are gerotor type pump with positive displacement of oil. applicable in machines which require low discharge, medium pressure of oil. These pump are of two type: Reversible and non-reversible. Non-reversible pumps rotates only in one direction and reversible pump rotated in either directions. (Clockwise and anticlockwise).



### Technical Specification

Reversible / Non Reversible

MODEL	DISCHARGE	MAX. PRESSURE
LTR - 1	1 Litre per minuts	50Kg/cm <sup>2</sup>
LTR - 3	3 Litre per minuts	30Kg/cm <sup>2</sup>
LTR - 6	6 Litre per minuts	20Kg/cm <sup>2</sup>
LTR - 10	10 Litre per minuts	20Kg/cm <sup>2</sup>
LTR - 16	16 Litre per minuts	20Kg/cm <sup>2</sup>
LTR - 20	20 Litre per minuts	20Kg/cm <sup>2</sup>
LTR - 25	25 Litre per minuts	20Kg/cm <sup>2</sup>
LTR - 40	40 Litre per minuts	10Kg/cm <sup>2</sup>

Note : These pump can be supplied with an electric motor also as per requirement.



## ELECTRONIC TIMER & CONTROLLERS

The Electronic Timer & Controllers are used for automatic controlling of lubrication systems. There are different models used for different applications. Following models are our regular production.

These are used in the lubrication systems where pressure switch/ float switch are provided for sensing the pressure load and low oil level. In the controllers signals for Pressure & low oil level sensing are provided. ON time is 5 sec. Fixed and OFF Time is 2 to 240 min, Adjustable.



### Electronic Controllers

MODEL	MOUNTING	ON TIME	OFF TIME
LT EC-1002 X W	Wall mounting	5 SEC. Fixed	2 to 128 min.(Adjustable)
LT EC-1002 X P	Panel mounting	5 SEC. Fixed	2 to 128 min.(Adjustable)

### Electronic Timer

MODEL	DESCRIPTION	SPECIFICATIONS
LTET-501	A-Wall mounting type B-Panel mounting type	ON time is fixed 5 sec. OFF time varies from 2min. to 128 min.
LTET-502	A-Wall mounting type B-Panel mounting type	ON time is fixed 5 sec. OFF time varies from 1min. to 240 min.
LTET-503	A-Wall mounting type B-Panel mounting type	ON time varies from 2 to 30 sec. OFF Time Varies from 2min. to 120 min. Both adjustable

## MULTILINE RADIAL LUBRICATOR



Multiline radial lubricator is best suited for machine/plant where lubrication is required with high pressure continuously / intermittently for individual point. This lubricator are used for machine / plant like rolling mill, sugar plant, cement plant, rubber mixing machine, forging hammer, stone crusher, stone iron plant etc.

This lubricator comprise of single pumping station having a number of plunger pump placed radially and fitted on to the outer periphery of the housing. Each plunger unit is given a reciprocating motion with the help of a cam. The cam rotates with the help of an electric motor and speed reduction gear box. The dose per plunger pump / cycle is 0.05 to 0.25cc (adjustable) with maximum pressure 200 Kg/cm<sup>2</sup>. These all plunger pump are connected to the lubrication point directly / progressive block by mean of tube, rubber hose, compression type fitting, clamping etc.

Grease Filling in the reservoir can be done manually as well as with the help of other pump. For pump 1/4" BSP port is provided on reservoir.

- Always use proper & Clean lubricants. Avoid foreign particles in the pump. The foreign particles or dust items are the main responsible factor to damage physical components of the pump and choking in the plunger body.
- Always fill the lubricants before it is empty to avoid air in the pump. The Presence of air may be resulted in improper quantity of discharge.
- Should always careful with regular maintenance of plungers and reservoir for its long life.
- Do not plug out put of any pumping unit.

### Technical Specification

MODEL	LT RL-5-6 / LT RL-5-6 *	LT RL-10-6 / LT RL-10-6*	LT RL-15-12 / LT RL-15-12*
Reservoir Capacity	4 Ltrs.	10 Ltrs.	15 Ltrs.
No. of pump elements	6 Pump elements	6 Pump elements	12 Pump elements
Discharge of Pump/cycle (Adj.)	0.10 to 0.25-cc (Max.6 gm/minute) per pump element.	0.10 to 0.25-cc (Max.6 gm/minute) per pump element.	0.10 to 0.25-cc (Max.6 gm/minute) per pump element.
Gear Box reduction ratio	60:1	60:1	60:1
Power of motor	0.25-H.P. 415 Volt AC, 3 Phase	0.25-H.P. 415 Volt AC, 3 Phase	0.25-H.P. 415 Volt AC, 3 Phase
Motor rpm	1440 rpm syn.	1440 rpm syn.	1440 rpm syn.
Working Pressure Oil/Grease	200/300 Kg/Cm <sup>2</sup> Maximum.	200/300 Kg/Cm <sup>2</sup> Maximum.	200/300 Kg/Cm <sup>2</sup> Maximum.

Note : \*Transparent reservoir  
Reservoir Capacity Provided as per Customer Requirement.



## PROGRESSIVE DISTRIBUTOR BLOCKS



Progressive distributor blocks of LTPB-4555 (Secondary Line) / LTPB-6080 (Primary Line) series are meant for distribution of grease / oil delivered by a pump. From this progressive block we get lubricant in sequentially one after another. Any one outlet is blocked then the progressive block will stop functioning. With suitable monitoring devices, this blockage is sensed and suitable warning is given to avoid running the machine without proper lubrication. These blocks can be used for intermittent / continuous lubrication.

<b>MODEL</b>	LTPB-4555-3-6	LTPB-4555-4-8	LTPB-4555-5-10	LTPB-4555-6-12	LTPB-4555-8-16
<b>MODEL</b>	LTPB-6080-3-6	LTPB-6080-4-8	LTPB-6080-5-10	LTPB-6080-6-12	LTPB-6080-8-16

**Note :** Indicator pin & Proximity switch can be provided as per customers requirement with additional cost.



## PNEUMATIC GREASE PUMP

The pneumatic grease pump is suitable for dispensing of grease & automatic feeding of grease to bearing and other moving part of machines. Such as milling machine, rolling machine, presses & hammers, rubber processing machine, die casting machine, furnaces etc. This pump is suitable for grease upto NLG-2. For distribution we used progressive blocks through this pump.

### TECHNICAL SPECIFICATION

MODEL	LPnGP-1500-10	LPnGP-3000-12	LPnGP-5000-15
<b>Reservoir capacity</b>	1.5Kg.	3 Kg.	5 Kg.
<b>Discharge/Stroke</b>	0-10 grams (Adj.)	0-12 grams (Adj.)	0-15 grams (Adj.)
<b>Delivery Pressure Max.</b>	150 Kg./cm <sup>2</sup>	120 Kg./cm <sup>2</sup>	100 Kg./cm <sup>2</sup>
<b>Input Pressure</b>	5-7 Kg./cm <sup>2</sup>	5-7 Kg./cm <sup>2</sup>	5-7 Kg./cm <sup>2</sup>

**Note :** Discharge & reservoir of pump is available as per customer requirement.  
Optional : Limit switch for Low level Grease indication



## MANUAL GREASE PUMP

Manual grease pump meant for feeding grease to bearing & other moving part of machines & other lightly machines having 1 to 20 lubrication point. These pump is made up of purely transparent acrylic reservoir for storage of grease, for sensing the Grease level a tell tale rod is provide and follower plate assembly for help in positive suction of grease. It contains two outlet part of M10xx1 BSP right and left side in which one is used as air bleed valve & second port used as o outlet. To check reverse flow of grease, a non return valve is provide in the system at the outlet port. Grease can be filled manually or with another pump. Filling from pump. M10x1 BSP/grease nipple port is provide. Manually, we have to remove follower plate, spring, top cover and fill the grease from the top of the reservoir and to fit all the components by pressure. For air removing unscrew the bleed plug pull the handle maximum out and press the follower plate by knob till grease comes out from bleed plug. A progressive block is used to distribute the grease to the available lubrication points in sequence one after another. Progressive Blocks are added as per requirement.

### TECHNICAL SPECIFICATION

MODEL	Reservoir	Discharge	Max Pressure	Wall Mounting
<b>LTMGP - 500-3</b>	Capacity .5Kg.	3cc Per Stroke	150 Kg./Cm <sup>2</sup>	4 Holes, 7 Dia
<b>LTMGP - 1000-4</b>	Capacity 1Kg.	4cc Per Stroke	120 Kg./Cm <sup>2</sup>	4 Holes, 7 Dia
<b>LTMGP - 1500-6</b>	Capacity 1.5Kg.	6cc Per Stroke	100 Kg./Cm <sup>2</sup>	4 Holes, 9 Dia

**Note :** We are also manufactured special pump as per customer requirement

## HAND OPERATED MOBILE GREASE FILLING SYSTEM



- LTHMGFS-5** (Reservoir Cap .-5Kg.) Discharge -8 gms per stroke, Max. Pr.-100Kg/Cm<sup>2</sup>, with Rubber hose & Grease adopter.
- LTHMGFS-10** (Reservoir Cap .-10Kg.) Discharge -10 gms per stroke, Max. Pr.-125Kg/Cm<sup>2</sup>, with Rubber hose & Grease adopter.
- LTHMGFS-20** (Reservoir Cap .-20Kg.) Discharge -10 gms per stroke, Max. Pr.-150Kg/Cm<sup>2</sup>, with Rubber hose & Grease adopter.

All above mentined models are mobile type. The pressure plate or dead weight has been provided in all the models to avoid the air gap. These pumps are suitable for pressurised greasing of machine parts.

**Note :** Remove the Pressure plate or dead weight from the bottom of reservoir before filling the grease in the reservoir. insert the pressure plate or dead weigh in reservoir after filling the grease in the reservoir.

## AIR OPERATED MOBILE GREASE FILLING SYSTEM



- LTAMGFS-25** (Reservoir Cap .-25Kg.) Discharge -300 to 400 gms per minute, (Mobile) Max. Pr.-120Kg/Cm<sup>2</sup>, with Rubber hose Grease gun & Trolley mounted.
- LTAMGFS-50** (Reservoir Cap .-50Kg.) Discharge -300 to 400 gms per minute, (Mobile) Max. Pr.-120Kg/Cm<sup>2</sup>, with Rubber hose Grease gun & Trolley mounted.
- LTAMGFS-200** Suitable for drum Cap .-200Kg., Discharge -300 to 400 gms per minute, (Mobile) Max. Pr.-150Kg/Cm<sup>2</sup>, Air input pressure 5-7Kg/Cm<sup>2</sup>. with Rubber hose & Grease gun. This pump is suitable for transfer the grease with greater discharge.

**Note :** \*Drum shown in the figure is not the part of item.

## MIST LUBRICATION SYSTEM



Mist. Lubrication System which is best suited for coneyor, Machine tools spindle, Chain, Sponge iron plant & Cement plant. bearing etc.

In Mist Lubrication System used the pump for carrying the oil up to atomizer. In atomizer two port is provided one for oil another for air This pump is pneumatically operated as well as motorised.

Pneumatic pump is suitable for intermittent lubrication. we can get continuous lubrication also. In this pump an acrylic / metallic reservoir with a capacity 2Ltr. / 5 Ltr., Discharge (Adjustable) Input air Pressure 3 to 5 kg/Cm<sup>2</sup> (accordingly customers requirment also.) and oil filling port is provided on the top. Through air pressure. Oil come in junction block (atomizer) Motorised pump is suitable for continuous / intermittent and multi point lubrication. Through motorised pump lubrication come in atomizer with the help of progressive block/metering cartridge/control valve from the atomizer we get the mist lubrication.

### TECHNICAL SPECIFICATION

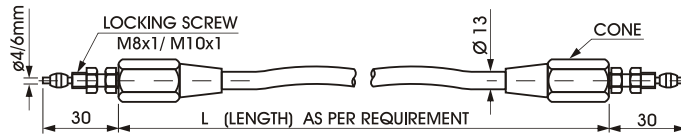
MODEL	Reservoir
LTOML - 2/PS/FS	2 Ltr.
LTOML - 5/PS/FS	5 Ltr.



Hose with 4/6 mm OD steel ends

## FLEXIBLE RUBBER HOSE

Hoses are used to connect points where flexibility is a must and also mechanical strength required. These hoses are available with 4mm and 6mm steel end fittings with working pressure of 28 Kg/cm<sup>2</sup> to 200 Kg/cm<sup>2</sup>. OD of these hoses is 13mm and ID of 6.3 mm. The length of hose pipes can be supplied as per customer requirement.



## TUBES

**Steel Tube :-** These are copper coated tube. 6mm OD tube used as a main line & 4mm OD tube used as a secondary line.

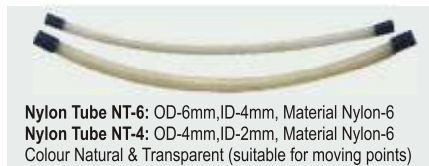
**Nylon Tube :-** These are semi transparent flexible tube of material nylon 6. These tube use where lubrication point is movable.

### STEEL TUBES



**Steel Tube ST-4:** OD-4mm, ID-2.6mm (copper coated)  
**Steel Tube ST-6:** OD-6mm, ID-4.6mm (copper coated)

### NYLON TUBES



**Nylon Tube NT-6:** OD-6mm, ID-4mm, Material Nylon-6  
**Nylon Tube NT-4:** OD-4mm, ID-2mm, Material Nylon-6  
Colour Natural & Transparent (suitable for moving points)

### MECHANICAL PROTECTION SPRING

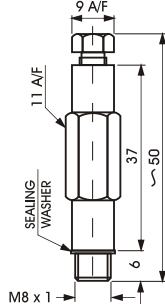


**Mechanical Protection Spring**  
Safe guard of 4 mm & 6 mm OD Nylon tube from Hot chips, temperature & friction from M/c.

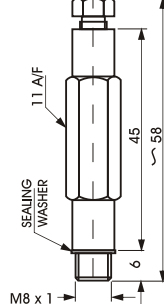
## METERING CARTRIDGES



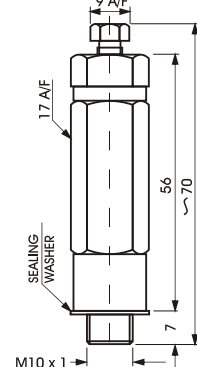
LTD 1



LTD 2



LTD 3



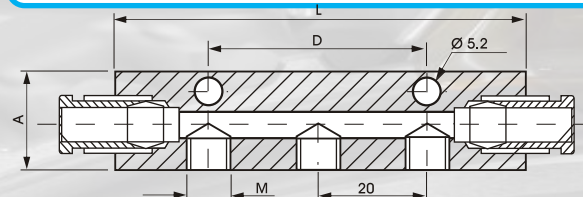
### Technical Specifications

<b>LTD 1</b>	Dosage 0.01cc, 0.03 cc, 0.05 cc, 0.10 cc, 0.16 cc per stroke.
<b>LTD 2</b>	Dosage 0.25 cc, 0.40 cc per stroke.
<b>LTD 3</b>	Dosage 1.0 cc, 1.60 cc, Per stroke

**Note :** We are manufacturing injectors in both BRASS and M.S.  
: Metering Cartridges are also available in liquid grease of grade 000.

## MANIFOLDS

Manifold are required for mounting of metering cartridge. These having two ports of 6mm OD tube and few side outlets. metering cartridge are screwed directly on side outlets of manifolds.



MODEL	L mm	A mm	Thickness mm	M mm	D mm	Mounting Holes
M-1	35	18	15	M8X1	-	1
M-2	55	18	15	M8X1	-	1
M-3	75	18	15	M8X1	40	2
M-4	95	18	15	M8X1	40	2
M-5	115	18	15	M8X1	40	2
M-6	135	18	15	M8X1	60	2
M-7	155	18	15	M8X1	60	2
M-8	175	18	15	M8X1	60	2
M-1A	40	22	22	M10X1	-	1
M-2A	65	22	22	M10X1	-	1
M-3A	90	22	22	M10X1	50	2
M-4A	115	22	22	M10X1	50	2



## PNEUMATIC OPERATED PISTON PUMPS



MODEL	DESCRIPTION
LTMPn-600-6	ReservoirCap.0.60Ltr.,(Aluminium/ Transparent)Discharge-6ccperstroke, InputAirPressure5-7Kg/Cm <sup>2</sup> ,PressureSetting-15Kg/Cm <sup>2</sup> .
LTMPn-2000-10	ReservoirCap.2Ltr.,(Aluminium/ Transparent)Discharge-10ccperstroke, InputAirPressure5-7Kg/Cm <sup>2</sup> ,PressureSetting-20Kg/Cm <sup>2</sup> .
LTMPn-3000-10	ReservoirCap.3Ltr.,Discharge-10ccperstroke,Input AirPressure5-7Kg/Cm <sup>2</sup> , PressureSetting15-20Kg/Cm <sup>2</sup> ,withFloatSwitch.
LTMPn/TSV -3000-10	ReservoirCap.3Ltr.,Discharge-10ccperstroke,Input AirPressure5-7Kg/Cm <sup>2</sup> , WithTimer,Solenoidvalve&FloatSwitch.

## Motor Pump Assembly



LTMPA - 1	1 Litre per minuts
LTMPA - 3	3 Litre per minuts
LTMPA - 6	6 Litre per minuts
LTMPA - 10	10 Litre per minuts
LTMPA - 16	16 Litre per minuts
LTMPA - 20	20 Litre per minuts
LTMPA - 25	25 Litre per minuts

## TAKEOFF METERING INJECTORS



MODEL	DESCRIPTION
LTMT-001	No.ofoutlets-1,Dosageincc0.1to0.4,DosageinDrops3-12. Areaincm <sup>2</sup> ,Min./Max.20/40,40/65,65/100,100/150.
LTMT-002	No.ofoutlets-2,Dosageincc0.1to0.4,DosageinDrops3-12. Areaincm <sup>2</sup> ,Min./Max.20/40,40/65,65/100,100/150.
LTMT-003	No.ofoutlets-3,Dosageincc0.1to0.4,DosageinDrops3-12. Areaincm <sup>2</sup> ,Min./Max.20/40,40/65,65/100,100/150.
LTMT-004	No.ofoutlets-4,Dosageincc0.1to0.4,DosageinDrops3-12. Areaincm <sup>2</sup> ,Min./Max.20/40,40/65,65/100,100/150.
LTMT - 005	No.ofoutlets-5,Dosageincc0.1to0.4,DosageinDrops3-12. Areaincm <sup>2</sup> ,Min./Max.20/40,40/65,65/100,100/150.

## NON RETURN VALVE



MODEL	DESCRIPTION
LTNRV-1	Material - SS 316, Creaking Pressure 0.9 Bar Max. Working Pr. - 6000 PSI. Thread Size - 1/4" BSP (F).

## OIL & GREASE FEEDERS



MODEL	DESCRIPTION
LTOF-500/S.V	OIL FEEDER Reservoir capacity : 500 gms. with solenoid valve & Flow Control valve.
LTGF-250	GREASE FEEDER Reservoir capacity : 250 gms, 1/4"BSP
LTGF-500	GREASE FEEDER Reservoir capacity : 500 gms, 1/4"BSP

## Special Lubrication Systems

### ADJUSTING MANIFOLD



MODEL	DESCRIPTION
<b>LTAM - 1</b>	No. of outlet-1, Flow adjustment as required.
<b>LTAM - 2</b>	No. of outlet-2, Flow adjustment as required.
<b>LTAM - 3</b>	No. of outlet-3, Flow adjustment as required.
<b>LTAM - 4</b>	No. of outlet-4, Flow adjustment as required.

Note : Inlet Suitable for 6 OD, outlet for 4 OD Tube

### SIGHT GLASS



MODEL	DESCRIPTION
<b>LTSG-25</b>	Tube dia 25mm, OD, Inlet & Outlet port 1/8" BSP.
<b>LTSG-38</b>	Tube dia 38mm, OD, Inlet & Outlet port 1/8" BSP.

### THROHLE VALUE



MODEL	DESCRIPTION
<b>LTV - 1</b>	1/8" X 1/8" BSP
<b>LTV - 2</b>	1/8" BSP X 4T
<b>LTV - 3</b>	M8 X 4T

### GREASE INJECTOR



MODEL	DESCRIPTION
<b>LTSL-33-1</b>	Discharge per min App. 20 Drops, Thread M8x18 1/6" BSP
<b>LTSL-32-1</b>	Discharge per min App. 30 Drops, Thread M8x18 1/6" BSP

### 12/24V DC RADIAL LUBRICATOR



MODEL	DESCRIPTION
<b>LTDCRL-2/1</b>	Reservoir Capacity 2 ltr. Number of Plunger Pump-1, Discharge 0 To 0.25cc Per Stroke / Element (Adj.), Max. Pressure 100kg/cm2, 12V DC/ 24V DC input supply.
<b>LTDCRL-2/2</b>	Reservoir Capacity 2 ltr. Number of Plunger Pump-2, Discharge 0 To 0.25cc Per Stroke / Element (Adj.), Max. Pressure 100kg/cm2, 12V DC/ 24V DC input supply.
<b>LTDCRL-2/4</b>	Reservoir Capacity 2 ltr. Number of Plunger Pump-4, Discharge 0 To 0.25cc Per Stroke / Element (Adj.), Max. Pressure 100kg/cm2, 12V DC/ 24V DC input supply..
<b>LTDCRL-5/4</b>	Reservoir Capacity 5 ltr. Number of Plunger Pump-4, Discharge 0 To 0.25cc Per Stroke / Element (Adj.), Max. Pressure 100kg/cm2, 12V DC/ 24V DC input supply.

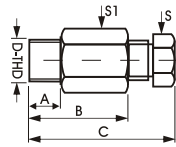
## FITTINGS



### STRAIGHT CONNECTORS

\*TAPER

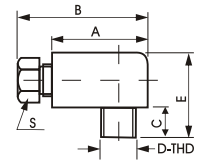
MODEL	Suitable for tube	D	A	B	C	S	S1
LTSC-4/M6X1	4 mm. 'OD'	M6X1	7	17	25	9	11
*LTSC-4T/M8X1	4 mm. 'OD'	M8X1	7	17	25	9	11
LTSC-4/M10X1	4 mm. 'OD'	M10X1	7	17	25	9	11
*LTSC-4T/1/8"BSP	4 mm. 'OD'	1/8"BSP	7	17	25	9	11
*LTSC-4T/1/4"BSP	4 mm. 'OD'	1/4"BSP	7	26	34	9	19
LTSC-6/M6X1	6 mm. 'OD'	M6X1	7	22	32	11	13
LTSC-6/M8X1	6 mm. 'OD'	M8X1	7	22	32	11	13
LTSC-6T/M10X1	6 mm. 'OD'	M10X1	7	22	32	11	13
LTSC-6/1/8"BSP	6 mm. 'OD'	1/8"BSP	7	22	32	11	13
LTSC-6/1/4"BSP	6 mm. 'OD'	1/4"BSP	7	26	34	11	19



### ELBOWS

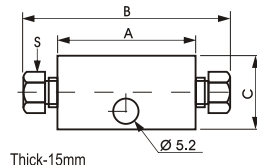
\*TAPER

MODEL	Suitable for tube	D	A	B	C	E	S
*LTE-4T/M6X1	4 mm 'OD'	M6X1	22	30	10	21	9
*LTE-4T/M8X1	4 mm 'OD'	M8X1	22	30	10	21	9
*LTE-4T/M10X1	4 mm 'OD'	M10X1	22	30	10	24	9
*LTE-4T/1/8"BSP	4 mm 'OD'	1/8"BSP	22	30	10	24	9
*LTE-4T/1/4"BSP	4 mm 'OD'	1/4"BSP	25	30	12	26	9
*LTE-6T/M6X1	6 mm 'OD'	M6X1	22	32	10	21	11
*LTE-6T/M8X1	6 mm 'OD'	M8X1	22	32	10	21	11
*LTE-6T/M10X1	6 mm 'OD'	M10X1	22	32	10	24	11
*LTE-6T/1/8"BSP	6 mm 'OD'	1/8"BSP	22	32	10	24	11
*LTE-6T/1/4"BSP	6 mm 'OD'	1/4"BSP	25	35	12	26	11



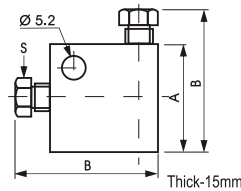
### CONNECTOR BLOCKS

MODEL	Suitable for tube	C	A	B	S
LTCB-4	4 mm 'OD'	18	35	50	9
LTCB-6	6 mm 'OD'	18	35	55	11



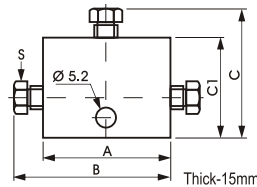
### ELBOW BLOCKS

MODEL	Suitable for tube	A	B	S
LTEB-4	4 mm 'OD'	25	33	9
LTEB-6	6 mm 'OD'	25	35	11



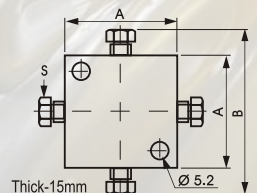
### TEE BLOCKS

MODEL	Suitable for tube	C1	C	A	B	S
LTTB-4	4 mm 'OD'	27	37	35	45	9
LTTB-6	6 mm 'OD'	27	37	35	45	11



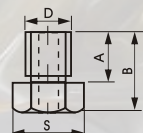
### CROSS BLOCKS

MODEL	Suitable for tube	A	B	S
LTCR-4	4 mm 'OD'	35	50	9
LTCR-6	6 mm 'OD'	35	55	11



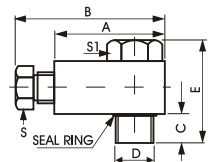
### LOCKING SCREW

MODEL	Suitable for tube	D	A	B	S
LTL-4	4 mm 'OD'	M8X1	8.5	12.5	11
LTL-6	6 mm 'OD'	M10X1	11	15	13



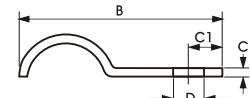
### BANJO ( 6mm )

MODEL	Suitable for tube	D	A	B	C	E	S	S1
LTB-6/M6X1	6 mm. 'OD'	M6X1	27	37	7	22	11	13
LTB-6/M8X1	6 mm. 'OD'	M8X1	27	37	7	22	11	13
LTB-6/M10X1	6 mm. 'OD'	M10X1	27	37	7	22	11	13
LTB-6/1/8"BSP	6 mm. 'OD'	1/8"BSP	27	37	7	22	11	13
LTB-6/1/4"BSP	6 mm. 'OD'	1/4"BSP	30	40	8	33	11	17



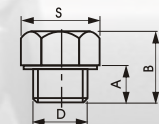
### CLAMPS

MODEL	Suitable for tube	Suitable for	D	C1	B	C
LTC-4-1	4 mm 'OD'	1 Tube	5.5	6	20	1.5
LTC-4-2	4 mm 'OD'	2 Tube	5.5	6	23	1.5
LTC-4-3	4 mm 'OD'	3 Tube	5.5	6	26	1.5
LTC-6-1	6 mm 'OD'	1 Tube	5.5	6	20	1.5
LTC-6-2	6 mm 'OD'	2 Tube	5.5	6	26	1.5
LTC-10-1	10 mm 'OD'	1 Tube	6.5	7	28	2.0



### PLUGS

MODEL	Sealing Washer	D	A	B	S
LTP-8	SW-8 mm 'OD'	M8X1	5	10	11
LTP-10	SW-10 mm 'OD'	M10X1	5	10	13
LTP-1/4"BSP	SW-1/4"BSP 'OD'	1/4"BSP	9	15	17
LTP-1/2"BSP	SW-1/2"BSP 'OD'	1/2"BSP	12	19	22



### LOCKING CONE (Ferule)

MODEL	Suitable for tube	
LTL-4 Brass	4 mm	Material brass ID-4mm
LTL-6 Brass	6 mm	Material brass ID-6mm
LTL-10 All.	10 mm	Material All./M.S. ID-10mm



## SPARES

### FLOAT SWITCH



MODEL	DESCRIPTION
LTFSH	For motorised lub. unit, for electrically oil level sensing NC / NO contact
LTFSH +	For motorised lub. unit, for electrically oil level sensing NO + NC contact
LTFSV	For motorised lub. unit, for electrically oil level sensing NC / NO contact
LTFSV +	For motorised lub. unit, for electrically oil level sensing NO + NC contact



### PRESSURE SWITCH

MODEL	DESCRIPTION
LTPS-830	Pressure switch used in motorised unit for Sensing pressure.
LTPS-020	Pressure switch used in motorised unit for Sensing pressure.



### PRESSURE GAUGE

MODEL	DESCRIPTION
LTPG-025	Dial size 40 mm, Bottom connection 1/8" NPT, Pressure range 0-25 Kg/Cm2.
LTPG-028	Dial size 50 mm, Bottom connection 1/8" NPT, Pressure range 0-28 Kg/Cm2.
LTPG-035	Dial size 63 mm, Bottom connection 1/8" NPT, Pressure range 0-35 Kg/Cm2.



### OIL FILLER CUM AIR BREATHER

MODEL	DESCRIPTION
LTB-03	Used for CLU-03 / ALR-03 / SLU-2700 Motorised unit.
LTB-20/30	Used for CLU-05 / CLU-08 / CLU-20 Motorised unit.



### SUCTION STRAINER

MODEL	DESCRIPTION
LTSS-08	For CLU-03 Motorised lubrication unit.
LTSS-30	For CLU-05 / CLU-08 Motorised lubrication unit.
LTSS-55	For pump PP-08 & PP-10



### RELIEF VALVE

MODEL	DESCRIPTION
LTRV-030-A	Use for pressure setting in Motorised Units.
LTRV-030-B	Use for pressure setting in Hyd. / Lub. Units.



### BLEAD VALVE

MODEL	DESCRIPTION
LTBV-030-A	Use for pressure setting in Motorised Units

A Source of Complete Oil & Grease Lubrication Solutions



## Lubtrack Multilub Systems

Plot No. C-50, East Chawla Colony, Ballabgarh  
Faridabad, Haryana -121004 (INDIA)

Mobile : 9599269569, 8860321075

E-mail : [lubtrackmultilub786@gmail.com](mailto:lubtrackmultilub786@gmail.com)  
[sales@lubtrack.com](mailto:sales@lubtrack.com), website : [www.lubtrack.com](http://www.lubtrack.com)

**AUTHORIZED DEALER Of: LUBTRACK MULTILUB SYSTEMS**